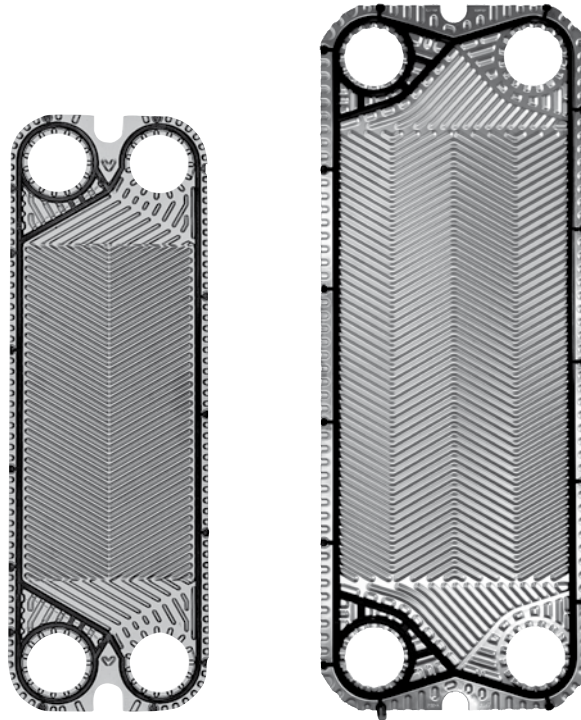


DN 65+

STANDARD OR CUSTOMIZED



www.cipriani-phe.com

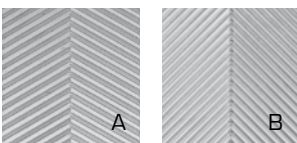


Product Range	P125+			P180+		Gamme Produits
Exchange area, m ²	0,125			0,18		Surface d'échange, m ²
Width, mm	245			320		Largeur, mm
Height, mm	723			844		Hauteur, mm
Connections diameter	DN65 2"1/2			DN65 2"1/2		Diamètre connexions
Channel capacity, l	0,366			0,5		Volume canal, l
Tightening measures	3,3 x Np + 2			2,85 x Np + 2		Cote de serrage
Plate weight (with gasket), Kg	0,69			1,03		Poids plaque jointée, Kg
Thermal length	A/B			A/B		Longueur thermique
Max. water flowrate, m ³ /h	80			83		Débit d'eau max, m ³ /h
PS=> Max working pressure, bar	6	10	16	6	10	PS=> Pression de service max
PT=> Max test pressure, EXEMPT*, bar	9	15	21	8	13	PT=> Pression d'épreuve, ex. Art. 3,3
PT=> Max test pressure, PED, bar	-	16	26	-	-	PT=> Pression d'épreuve, D.E.S.P.

Ex art. 3.3 D.Lgs. 93 of 25/02/2000 in accordance with Directive 97/23. Announced pressures are referred to AISI 316L plates.

Ex art. 3.3 selon Directive 97/23. Pressions indiquées pour plaques en inox AISI 316L

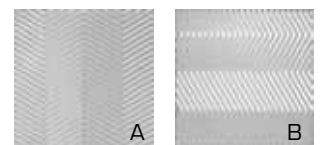
S125+



Plates are available in two thermal lengths (A/B)

Les plaques sont disponibles dans deux longueurs thermique (A/B)

S180+



DN32

DN65

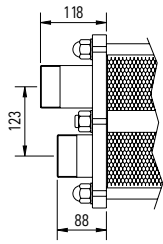
DN100

DN150

DN200

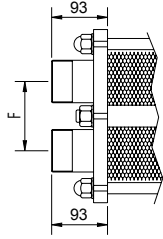
All data and drawings herewith described can be changed without prior notice and are not binding for the manufacturer

Les données et les dessins inclus dans ce document peuvent être sujets à modifications sans préavis et ne sont en aucun cas contraignants pour le fabricant



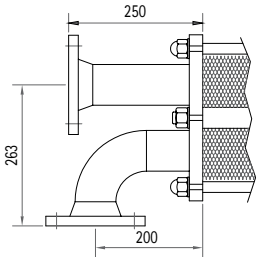
Z-Z I-I J-J S125+
Galvanized or stainless steel, male threaded connections. Applied in combination to a spacing aluminium plate in order to obtain a flat surface to support the initial exchange plate.

Raccords filetés mobiles zingués ou inox, maintenus en position au moyen d'une bride interne, garantissant une surface d'appui plane pour la plaque initiale.



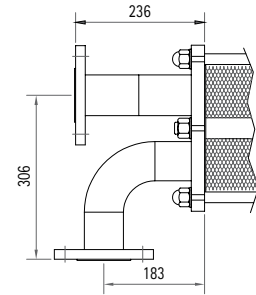
M-M
Moplen male threaded connections. A cavity drilled on the inner side of the front frame plate creates a flat surface to support the first exchange plate.

Raccords filetés mobiles en polypropylène, maintenus en position au moyen d'une bride interne, garantissant une surface d'appui plane pour la plaque initiale.



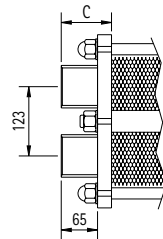
F-F S125+
Welded Carbon steel flanged connections with flanges PN16, welded to the end of the socket. For all models a bent socket at 90° is foreseen in order to avoid the flanges to be too close to each other.

Brides de connexion PN16-40 soudées sur tube en acier au carbone peint. Raccordement garanti sans interférence par interposition de deux coudes à 90°.



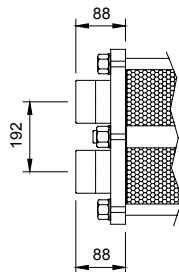
X-X S125+
Flanged connections in stainless steel 316L with flanges PN16. For all models a bent socket at 90° is foreseen in order to avoid the flanges to be too close to each other.

Brides inox de connexion PN16/PN40 soudées sur tube en inox. Raccordement garanti sans interférence par interposition de deux coudes à 90°.



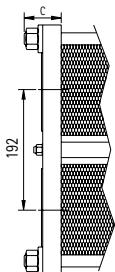
S-S S125+
Carbon steel, female threaded connections directly welded onto the headframe in accordance to the holes of the frame plate.

Raccords filetés femelle en acier carbone, soudés directement au plateau de bâti.



Z-Z I-I J-J S180+
Galvanized or stainless steel, male threaded connections. Applied in combination to a spacing aluminium plate in order to obtain a flat surface to support the initial exchange plate.

Raccords filetés mobiles zingués ou inox, maintenus en position au moyen d'une bride interne, garantissant une surface d'appui plane pour la plaque initiale.



A-A S180+
Connections to be flanged provided with threaded holes enabling the fixing of the flange directly to the frame plate. The inner hole is lined with a rubber gasket foreseen in the same rubber quality of the plate gaskets.

Raccords bridés pour bridage directement sur le plateau de bâti, chaque raccord étant muni de manchette d'étanchéité.

	S125+	S180+	
Plate Material	Inox AISI 304	●	Inox AISI 304
	Inox AISI 316L	●	Inox AISI 316L
	254 SMO	●	254 SMO
Gasket Material	Titanium	●	Titane
	NBR	●	NBR
	EPDM Prx.	●	EPDM Prx.
	FPM	●	FPM
Frame Material	HNBR	●	HNBR
	Carbon steel	●	Acier au carbone
	AISI 304, solid	●	Inox AISI 304, plein
Connection type/material	(Z-Z) Galvanized	●	Zingués (Z-Z)
	(I-I) AISI 304	●	AISI 304 (I-I)
	(J-J) AISI 316	●	AISI 316 (J-J)
	(M-M) Moplen	●	Polypropylène (M-M)
	(F-F) (X-X) Flanges	●	Brides (F-F) (X-X)
	(S-S) Welded	●	Soudés (S-S)
	(A-A) Rubber or inox liner	●	Manchette (A-A)

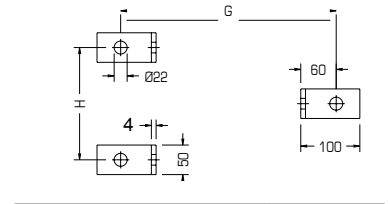
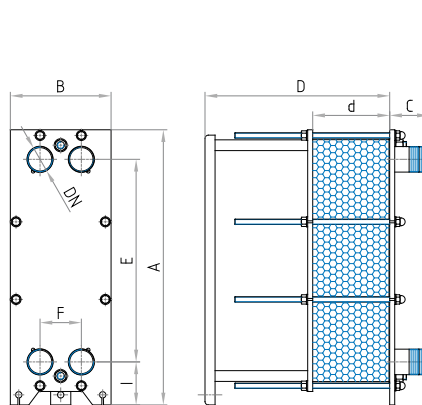
Gaskets material maximum temperatures Limites de températures des joints			
NBR	-20 °C	110 °C	NBR
EPDM Prx.	-20 °C	160 °C	EPDM Prx.
FPM	-20 °C	200 °C	FPM
HNBR	-20 °C	160 °C	HNBR

The temperatures referred to are an indication only and must be considered as general information not applicable in all working conditions.

Les températures sont indiquées à titre indicatif. Il s'agit d'informations générales et ne sont pas valables dans toutes les conditions de service.

Frames size / Cotes de bâti

Feet / Pieds d'ancrage



GxH	Max 71p	Max 151p
S125+ PS6	658x250	1158x250
S125+ PS10	663x250	1163x250
S125+ PS16	668x250	1168x250
S180+ PS6	663x319	1163x319
S180+ PS10	668x319	1168x319

	S125+			S180+		
A	-			J-J	A-A	
	819			996	1016	
B	310			392		
E	603			720		
F	123			192		
I	128			171,5		
Np* max	41	71	151	41	71	151
D* max	550	550	1050	550	550	1050
d	3,3 x Np+2			2,85 x Np+2		
DN	DN65 2"1/2			DN65 2"1/2		
I - I	J - J	C I		88		
Z - Z			C II	88		
M - M	C			93		
S - S	C			65 + sp		
F - F			C I	293		
			C II	250		
X - X			C I	276		
			C II	236		
A - A			C	-		
			C	50		

* To obtain the total measure add the correct connection dimension to D dimension (C, C I or II)

Np = number of plates

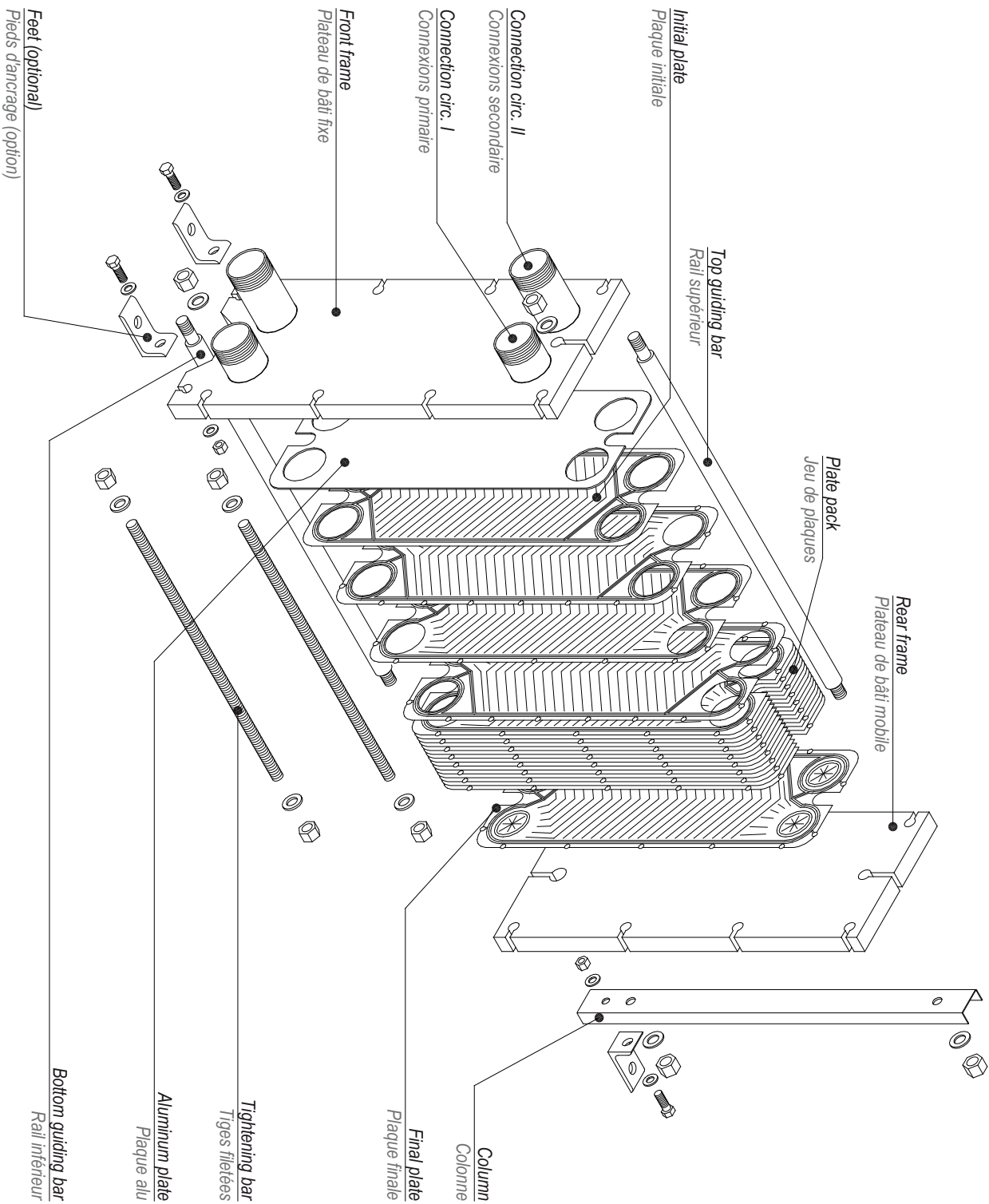
NB: All dimensions are in mm

* Pour obtenir l'encombrement total, il est nécessaire d'ajouter la cote D à l'encombrement des raccords (C, C I or II)

Np = nombre de plaques

N.B. Cotes exprimées en mm

Component blow-up drawings Models S125+, S180+
 Esplosé composants S125+, S180+



**CERTIFICATIONS
 APPROVALS**



- EN ISO 9001:2008
- PED 97/23/EC (B, D, 1 & D modules)
- GOST-R
- ACS Attestation de Conformité Sanitaire
- DNV Rules for Classification of Ship

