

Cooke Industries extensive product range is broken into distinctive product groupings, with solutions to suit every application:



## AIRPAK Air Handling Products

The leader in premium quality air handling solutions including:

- Central Station Air Handling Units • Fan Coil Units
- Centrifugal Fans • Gas Fired Air Heaters
- Heat Recovery Products • Ductwork



## NORTHVALE Heating Products

Setting the standard for high efficiency, low emissions, and premium quality:

- Hot Water Boilers • Steam Boilers • Flue Systems • PHE
- Hot Water Heaters • Calorifiers & Storage Vessels
- Expansion Vessels • Valves, Gauges & Accessories



## MULTICHILL Refrigeration Products

European and locally designed and manufactured products for the commercial water cooling market.

- Air & Water Cooled Chillers • Heat Pumps
- Multifunction Heat Recovery Units • Cooling Towers
- S&T Condensers & Evaporators • Dry Coolers & Axial Condensers • Brazed Plate Heat Exchangers



## TROX Technik Air Distribution Products

The leading edge in air diffusion, volume control, fire protection, and laboratory control products.

- Air Diffusers • Chilled Beams & Ceilings • Flow Rate Control
- Volume Control Dampers • Fire Protection
- Industrial Dampers • Laboratory Control Products



## NAP Silentflo Acoustic Products

A full range of independently laboratory certified acoustic solutions for every application, from architectural through commercial to industrial.

- HVAC Duct Silencers • Acoustic Louvres
- Industrial Silencers • Acoustic Doors
- Reverberation Control • Acoustic Enclosures

## Service

Cooke Industries are a leading HVAC service company in the Auckland region

Service is provided in the following broad categories:

- Planned maintenance of mechanical services systems in buildings.
- Small works associated with tenancy fitouts and customers requirements.
- Installation of company products; air handling units, water chillers, boilers, diffusers - for new and replacement applications.
- Start up, warranty, routine and breakdown maintenance of HVAC and refrigeration equipment.

There are particular skills including engineering fitting, refrigeration and air conditioning service, boiler service, electrical wiring and electronic servicing.

The service provided includes 24hr on call for urgent after-hours breakdowns.

## Contact



www.cookeindustries.co.nz

### HEAD OFFICE

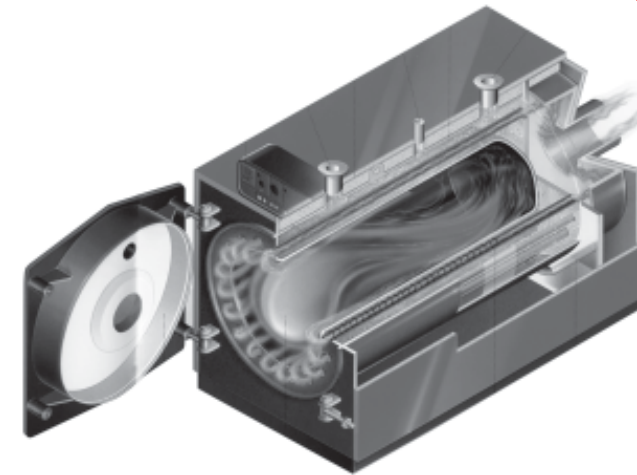
31 Station Road, Penrose, PO Box 12021,  
Auckland 1135, New Zealand  
Telephone: +64-9-579 2185  
Fax: +64-9-579 2181  
Email: sales@cookeindustries.co.nz

### CHRISTCHURCH OFFICE

Level 3, 161-163 Kilmore Street, PO Box 17709,  
Sumner 8030, Christchurch, New Zealand.  
Telephone: +64-3-379 7884  
Fax: +64-3-379 7874  
Email: chch@cookeindustries.co.nz

northvale heating products

By Cooke Industries Ltd. Auckland

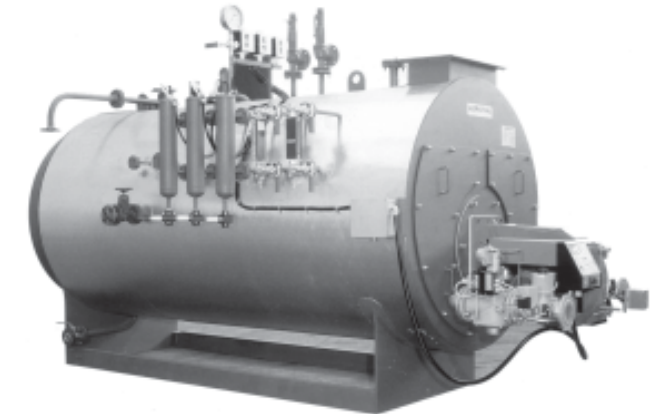


## Hot Water Boilers

22 – 3,500 kW capacity  
domestic & commercial  
models

Super high efficiency & low  
NOx designs

Gas, oil, and dual fuel options



## Steam Boilers

200 – 20,000 kg/h capacity

2-pass & 3-pass wet back  
designs

Pressures up to 21 bar



## Calorifiers

200 – 10,000L DHW capacity

Organic coated, Glass lined,  
AISI316L, & SAF2205 stainless  
steel options

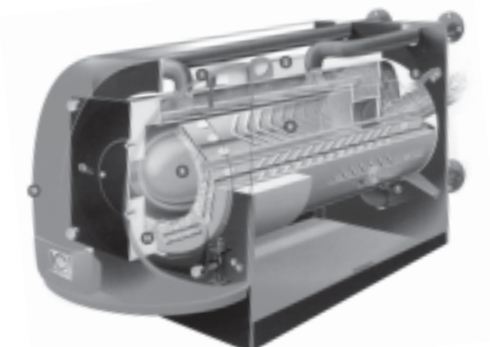
Standard & solar models.  
Electric boost option

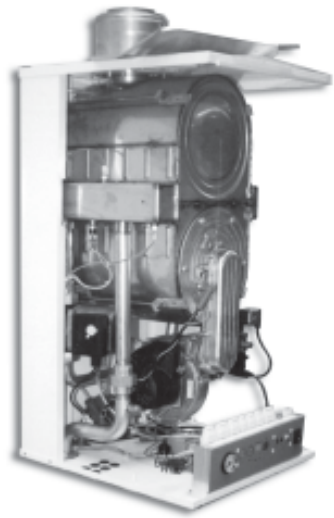
## Condensing Boilers

35 – 2,300 kW capacity

Efficiencies up to 109%

AISI 316Ti heat exchanger materials





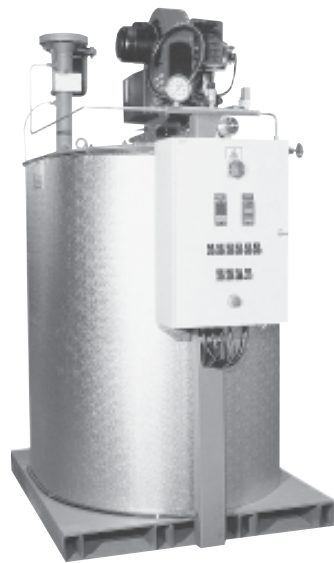
### Wall Hung Condensing Boilers

24 – 180 kW capacity, gas fired  
Compact & very high efficiency  
Individual or up to 8 units in cascaded installation  
Factory assembled rigs



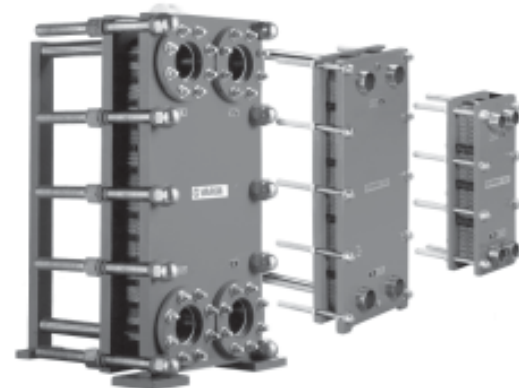
### Steam Generators

10 – 8,000 kg/h capacity gas & oil fired models  
9 – 170 kg/h capacity electric models  
Working pressure up to 110bar  
Forced circulation water tube & tubeless steam generator designs



### Thermal Oil Heaters

100 – 7,000 kW capacity  
Working temperatures up to 340°C



### Plate Heat Exchangers

Modular AISI 316 construction  
For DHW, Heating Water & Steam

### Storage Tanks

200 – 10,000L capacity  
Chilled water, Heating water & DHW models  
MS plain & HD galvanized, Glass Lined & SS options



### Expansion Vessels

5 – 1,000L capacity  
Chilled water, Heating water & DHW models

### Valves / Gauges / Accessories

Automatic Air Vents  
Relief Valves  
Flow Switches  
Automatic Filling Valves  
Backflow Preventers  
Drain Valves  
Pressure Gauges  
Thermometers



### Boiler Flues

Modular twin wall stainless steel construction  
1000 to 6000  
Copper external skin option

