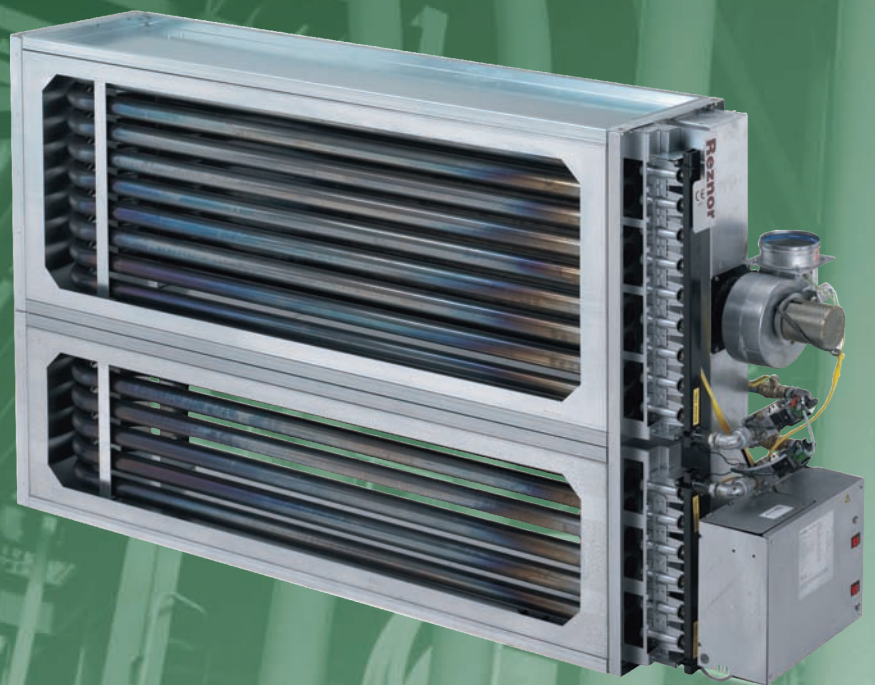


RHC

GAS FIRED HEATING COILS



REZNOR®

RHC GAS FIRED HEATING COILS

Reznor gas fired heating coils further extend the possibilities of Reznor heating solutions. They are designed for inclusion in an (AHU) air handling unit to provide a gas fired heat exchanger section or for installation in ductwork systems.

They are also suitable for replacing steam and hot water coils in existing units and plenum systems thereby enabling changeover from central boiler plant to decentralised gas fired systems

RHC 4000

The RHC 4000 range extends from 11 to 200 kW output

RHC 8000

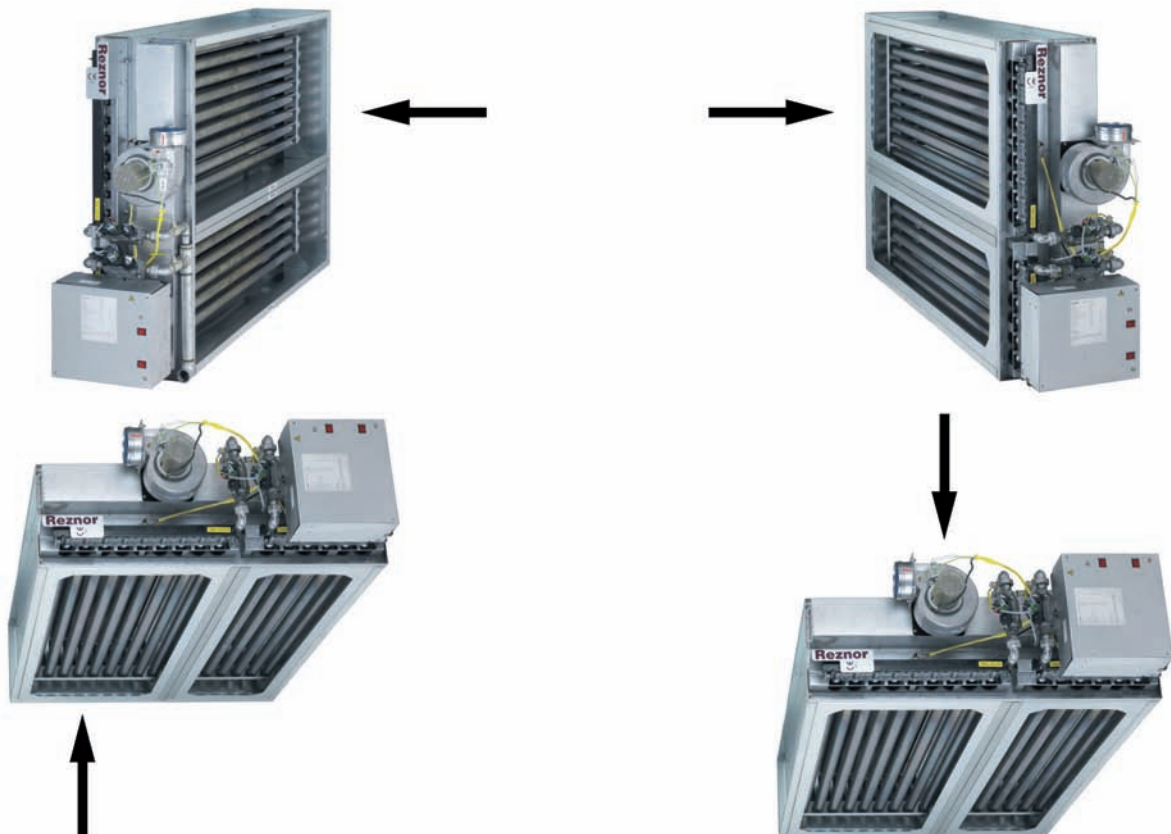
With a choice of 15 outputs (30 to 300 kW) units can be mounted in multiples of up to three in series and two high, or side by side, enabling heat outputs up to 1200 kW.

Both types of unit are suitable for either indoor (DJL models) or outdoor (RJL models) applications.

Benefits

- High efficiency units qualify for enhanced capital allowances.
- Application flexibility- All units can accommodate both vertical and horizontal airflows.
- Choice of controls- Close temperature control - On/Off High/Low or modulating.
- Longer life- Heat exchanger tubes are expanded into a collection box, eliminating welds. Furthermore they are available with a choice of stainless or aluminised steel tubes.
- Low cost - Simple installation reduces costs.
- Optimum choice- The different tube lengths available in both the RHC 4000 and RHC 8000 units offers the designer a wide choice to suit the air handling unit profile

Air Flow Directions



Note: Where optional diffuser plate is used, it must be fitted on the air inlet

EXAMPLES

Optional Control Vestibules



DJI MODEL
Internal application



RJI MODEL
External application

Multiple Units



Monobloc Double Unit



Monobloc Triple Unit

Range capability can be increased by
Mounting units two high or side by side.

RHC 4000

4011.03 → 4036.08

RHC 4000 Gas Fired Heating Coils

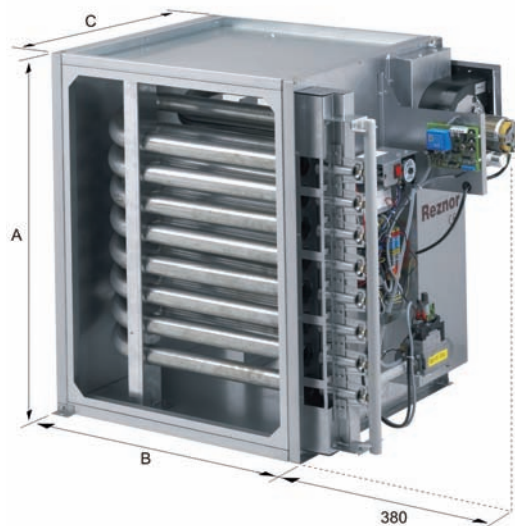
Model		4011.03	4015.04	4018.05	4024.05	4030.06	4036.08
Nominal heat output	kW	11	15	18	24	30	36
Natural gas consumption ¹	m ³ /h	1,26	1,68	2,10	2,79	3,49	4,20
LPG consumption ¹	kg/h	0,94	1,26	1,57	2,10	2,61	3,14
Gas connection ²	Rc	3/4					
Flue diameter (RJL)	mm	100					
Flue diameter (DJL)	mm	80		100			130
Combustion air inlet (DJL)	mm	80		100			130
Electrical consumption (230V 1Ph 50Hz)	kW	0,153					
Net weight	kg	20	25	30	31	33	52

Note:

1. Natural gas G20 - calorific value 10.48 kWh/m³ GCV. Propane G31 calorific value 14.0 kWh/kg GCV
2. Not supply line size

For full technical data please contact Reznor.

RHC 4000 Dimension Data



Model		4011.03	4015.04	4018.05	4024.05	4030.06	4036.08
Height A	mm	305	458	458	559	559	837
Width B	mm	547	547	547	677	677	677
Depth C	mm	590	590	590	648	648	648

Pressure Drop Data - Standard Airflow

Model		4011.03	4015.04	4018.05	4024.05	4030.06	4036.08
Minimum airflow	m ³ /h	1465	1940	2270	2880	3290	5281
Pressure drop minimum airflow	Pa	15	15	15	20	15	25

RHC 4000

4050.06 → 4100.12

RHC 4000 Gas Fired Heating Coils

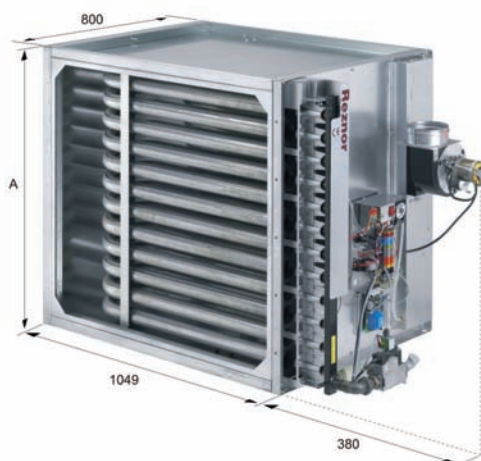
Model		4050.06	4060.07	4075.09	4100.12
Nominal heat output	kW	51	61	75	100
Natural gas consumption ¹	m ³ /h	5,92	7,12	8,73	11,45
LPG consumption ¹	kg/h	4,43	5,25	6,61	8,57
Gas connection ²	Rc	3/4			
Flue diameter (RJL)	mm	100			
Flue diameter (DJL)	mm	130			
Combustion air inlet (DJL)	mm	130			
Electrical consumption (230V 1Ph 50Hz)	kW	0,153			
Net weight	kg	90	100	120	149

Note:

1. Natural gas G20 - calorific value 10.48 kWh/m³ GCV. Propane G31 calorific value 14.0 kWh/kg GCV
2. Not supply line size

For full technical data please contact Reznor.

RHC 4000 Dimension Data



Model		4050.06	4060.07	4075.09	4100.12
Height A	mm	531	601	741	950

Pressure Drop Data - Single Module

Model		4050.06	4060.07	4075.09	4100.12
Minimum airflow	m ³ /h	3900	4700	5700	7500
Pressure drop minimum airflow	Pa	40	40	37	40

Pressure Drop Data - Twin Module

Model		4050.06	4060.07	4075.09	4100.12
Minimum airflow	m ³ /h	5950	7150	8800	11700
Pressure drop minimum airflow	Pa	150	150	150	156

RHC 4000

4110M.13 → 4200M.24

RHC 4000 Gas Fired Heating Coils

Model		4110M.13	4125M.15	4150M.18	4175M.21	4200M.24
Nominal heat output	kW	112	126	151	175	199
Natural gas consumption ¹	m ³ /h	13,02	14,63	17,44	20,19	22,94
LPG consumption ¹	kg/h	9,61	10,79	12,85	14,89	16,91
Gas connection ²	Rc	1 1/4				
Flue diameter (RJL)	mm	130				
Flue diameter (DJL)	mm	130				
Combustion air inlet (DJL)	mm	130				
Electrical consumption (230V 1Ph 50Hz)	kW	0,282				0,655
Net weight	kg	200	220	250	279	313

Note:

1. Natural gas G20 - calorific value 10.48 kWh/m³ GCV. Propane G31 calorific value 14.0 kWh/kg GCV
2. Not supply line size

For full technical data please contact Reznor.

RHC 4000 Dimension Data



* 460mm for model 4200M

Model		4110M.13	4125M.15	4150M.18	4175M.21	4200M.24
Height A	mm	1132	1272	1481	1691	1900

Pressure Drop Data - Single Module

Model		4110M.13	4125M.15	4150M.18	4175M.21	4200M.24
Minimum airflow	m ³ /h	8600	9600	12300	14100	16300
Pressure drop minimum airflow	Pa	70	68	44	43	44

Pressure Drop Data - Twin Module

Model		4110M.13	4125M.15	4150M.18	4175M.21	4200M.24
Minimum airflow	m ³ /h	13100	14700	17600	20500	23300
Pressure drop minimum airflow	Pa	352	359	178	181	165

RHC 8000

8030.06 → 8090.18

RHC 8000 Gas Fired Heating Coils

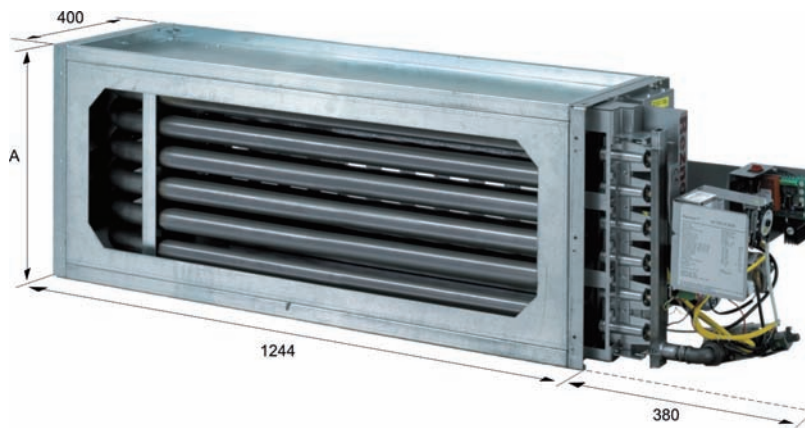
Model		8030.06	8045.09	8060.12	8075.15	8090.18
Nominal heat output	kW	30	46	61	75	90
Natural gas consumption ¹	m ³ /h	3,53	5,34	7,12	8,72	10,48
LPG consumption ¹	kg/h	2,64	4,00	5,33	6,43	7,72
Gas connection ²	Rc	3/4				
Flue diameter (RJL)	mm	100			130	
Flue diameter (DJL)	mm	100	130			
Combustion air inlet (DJL)	mm	100	130			
Electrical consumption (230V 1Ph 50Hz)	kW	0,153				
Net weight	kg	60	87	120	140	160

Note:

1. Natural gas G20 - calorific value 10.48 kWh/m³ GCV. Propane G31 calorific value 14.0 kWh/kg GCV
2. Not supply line size

For full technical data please contact Reznor.

RHC 8000 Dimension Data



Model		8030.06	8045.09	8060.12	8075.15	8090.18
Height A	mm	531	741	950	1160	1369

Pressure Drop Data - Single Module

Model		8030.06	8045.09	8060.12	8075.15	8090.18
Minimum airflow with optional diffuser plate	m ³ /h	3750	5650	7500	9300	11200
Pressure drop with diffuser plate	Pa	85	90	90	85	85
Minimum airflow standard unit	m ³ /h	4400	6600	8750	11900	14300
Pressure drop minimum airflow	Pa	40	40	40	50	50

Pressure Drop Data - Twin Module

Model		8030.06	8045.09	8060.12	8075.15	8090.18
Minimum airflow with optional diffuser plate	m ³ /h	3750	5650	7500	9300	11200
Pressure drop with diffuser plate	Pa	90	100	100	95	95
Minimum airflow standard unit	m ³ /h	4400	6600	8750	11900	14300
Pressure drop minimum airflow	Pa	70	75	75	80	80

Pressure Drop Data - Triple Module

Model		8030.06	8045.09	8060.12	8075.15	8090.18
Minimum airflow standard unit	m ³ /h	5250	7850	10500	13000	15800
Pressure drop minimum airflow	Pa	135	140	145	135	140

RHC 8000

8050.06 → 8200M.24

RHC 8000 Gas Fired Heating Coils

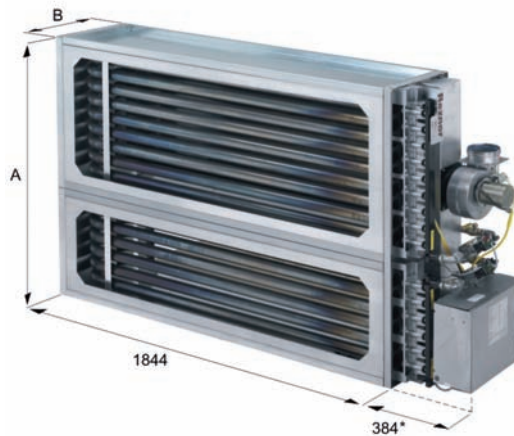
Model		8050.06	8075.09	8100.12	8125M.15	8150M.18	8175M.21	8200M.24
Nominal heat output	kW	51	76	100	126	150	174	200
Natural gas consumption ¹	m ³ /h	5,92	8,73	11,45	14,63	17,44	20,19	23,28
LPG consumption ¹	kg/h	4,43	6,61	8,57	10,78	12,85	14,88	17,16
Gas connection ²	Rc		3/4				1 1/4	
Flue diameter (RJL)	mm		100				130	
Flue diameter (DJL)	mm				130			
Combustion air inlet (DJL)	mm				130			
Electrical consumption (230V 1Ph 50Hz)	kW		0,153			0,282		0,656
Net weight	kg	80	110	145	200	230	265	305

Note:

1. Natural gas G20 - calorific value 10.48 kWh/m³ GCV. Propane G31 calorific value 14.0 kWh/kg GCV
2. Not supply line size

For full technical data please contact Reznor.

RHC 8000 Dimension Data



* 460 mm for model 8200

Model		8050.06	8075.09	8100.12	8125M.15	8150M.18	8175M.21	8200M.24
Height A	mm	531	741	950	1272	1482	1691	1900
Depth B	mm	400	400	400	400	400	400	530

Pressure Drop Data - Single Module

Model		8050.06	8075.09	8100.12	8125M.15	8150M.18	8175M.21	8200M.24
Minimum airflow with optional diffuser plate	m ³ /h	6200	9300	12400	15600	18200	18650	20900
Pressure drop with diffuser plate	Pa	100	115	115	110	110	85	80
Minimum airflow standard unit	m ³ /h	7150	10750	14300	18000	21000	21500	24000
Pressure drop minimum airflow	Pa	50	50	50	50	50	40	40

Pressure Drop Data - Twin Module

Model		8050.06	8075.09	8100.12	8125M.15	8150M.18	8175M.21	8200M.24
Minimum airflow with optional diffuser plate	m ³ /h	6200	9300	12400	15600	18200	20100	23300
Pressure drop with diffuser plate	Pa	110	120	120	120	120	125	125
Minimum airflow standard unit	m ³ /h	7150	10750	14300	18000	21000	21500	24000
Pressure drop minimum airflow	Pa	85	95	90	95	95	70	65

Pressure Drop Data - Triple Module

Model		8050.06	8075.09	8100.12	8125M.15	8150M.18	8175M.21	8200M.24
Minimum airflow standard unit	m ³ /h	8900	13300	17500	22100	26300	30500	35000
Pressure drop minimum airflow	Pa	170	185	180	180	185	185	150

RHC 8000

8225M.18 → 8300M.24

RHC 8000 Gas Fired Heating Coils

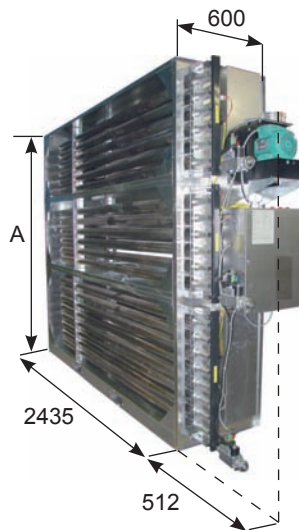
Model		8225M.18	8250M.20	8275M.22	8300M.24
Nominal heat output	kW	222	247	272	296
Natural gas consumption ¹	m ³ /h	25,78	28,66	31,53	34,41
LPG consumption ¹	kg/h	19,00	21,12	23,24	25,36
Gas connection ²	Rc	1 1/4			
Flue diameter (RJL)	mm	130			
Flue diameter (DJL)	mm	150			
Combustion air inlet (DJL)	mm	150			
Electrical consumption (230V 1Ph 50Hz)	kW	0,84			
Net weight	kg	487	501	516	530

Note:

1. Natural gas G20 - calorific value 10.48 kWh/m³ GCV. Propane G31 calorific value 14.0 kWh/kg GCV
2. Not supply line size

For full technical data please contact Reznor.

RHC 8000 Dimension Data



Model		8225M.18	8250M.20	8275M.22	8300M.24
Height A	mm	1917	2083	2249	2415

Pressure Drop Data - Single Module

Model		8225M.18	8250M.20	8275M.22	8300M.24
Min airflow with optional diffuser plate	m ³ /h	22800	25200	27600	29700
Pressure drop with diffuser plate	Pa	35	35	35	35
Minimum airflow standard unit	m ³ /h	33600	37200	40800	43800
Pressure drop at minimum air flow	Pa	40	40	40	40

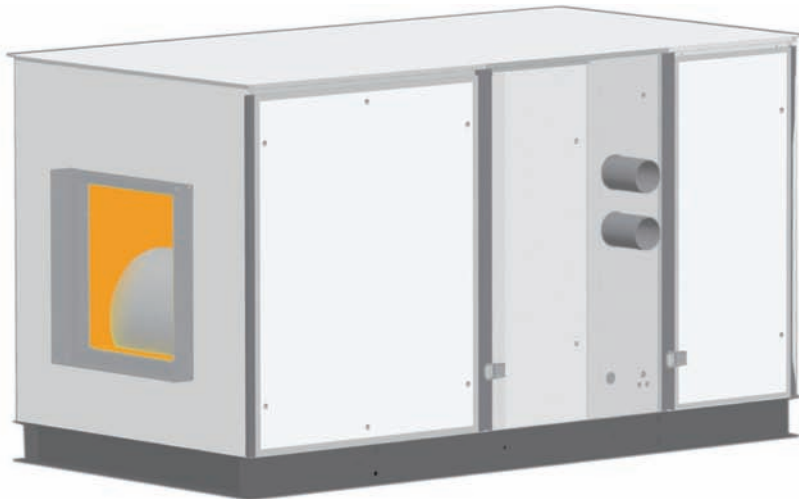
Pressure Drop Data - Twin Module

Model		8225M.18	8250M.20	8275M.22	8300M.24
Min airflow with optional diffuser plate	m ³ /h	26300	30000	39000	42700
Pressure drop with diffuser plate	Pa	65	65	95	95
Minimum airflow standard unit	m ³ /h	36500	44300	57700	63000
Pressure drop at minimum air flow	Pa	88	105	148	151

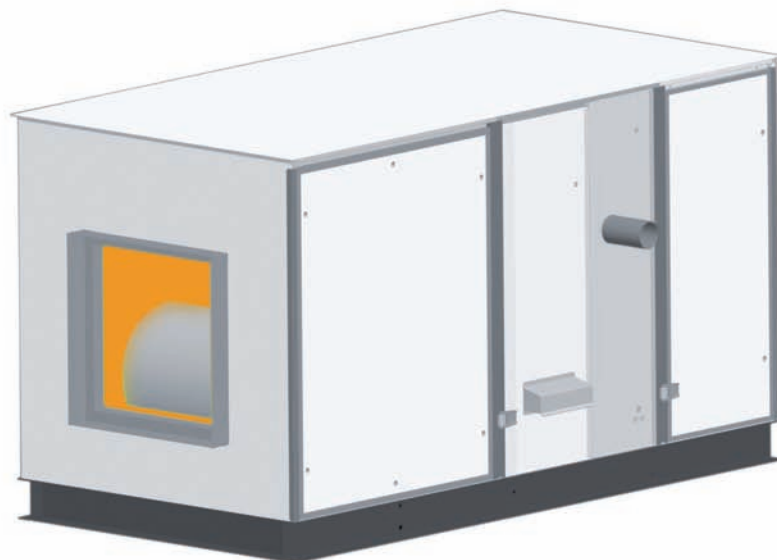
Pressure Drop Data - Triple Module

Model		8225M.18	8250M.20	8275M.22	8300M.24
Minimum airflow standard unit	m ³ /h	39500	44300	57700	63000
Pressure drop at minimum air flow	Pa	154	159	224	227

Concentric Flue Arrangements



Typical example of an DJL unit fitted into AHU for external installation



Typical example of an RJL unit fitted into AHU for external installation

REZTOR[®]

J&M Sabbestraat 130
B-8930 Menen

België

Tel. +32(0) 56 52 95 11

Fax. +32(0) 56 52 95 33

e-mail: reznor.europe@tnb.com

website: www.reznor.eu

Company Standards and Services:

All Reznor products are tested and approved to CE standards. Reznor Europe nv is assessed to GASTEC EN ISO 9001: 2000 Quality Assurance. Reznor offers a service to its customers; including budget schemes, on site technical support and a comprehensive after-sales package. Reznor reserves the right to change specifications without prior notice.

ISO 9001
registered by
GASTEC



Thomas&Betts

0912RHC GBEN