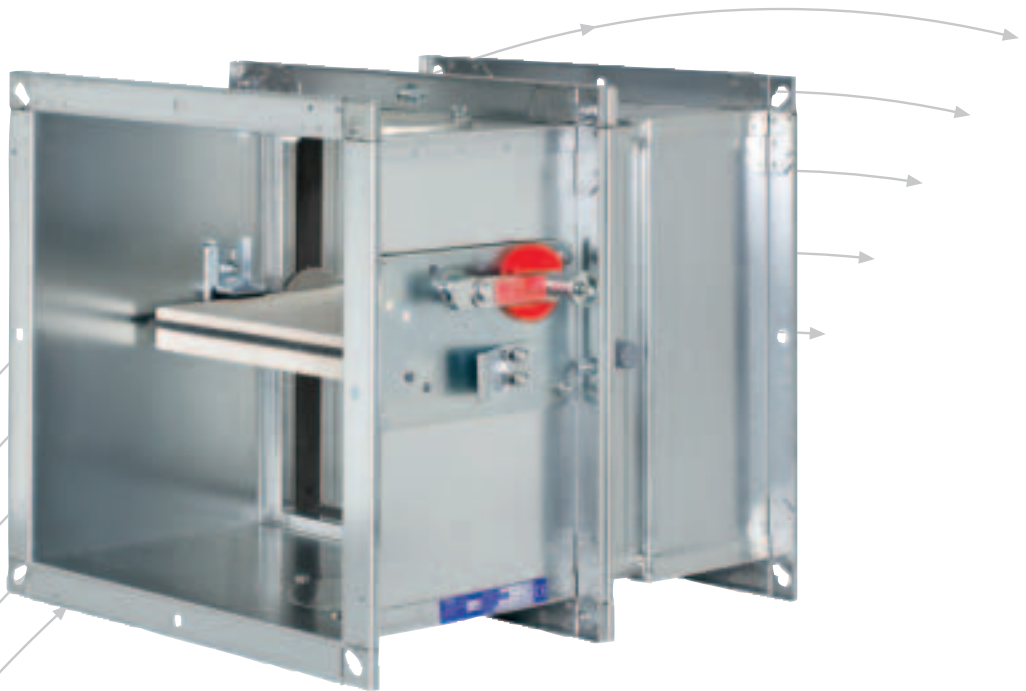


Fire dampers

Type FK-K90
with general building inspectorate licence

Z-41.3-321



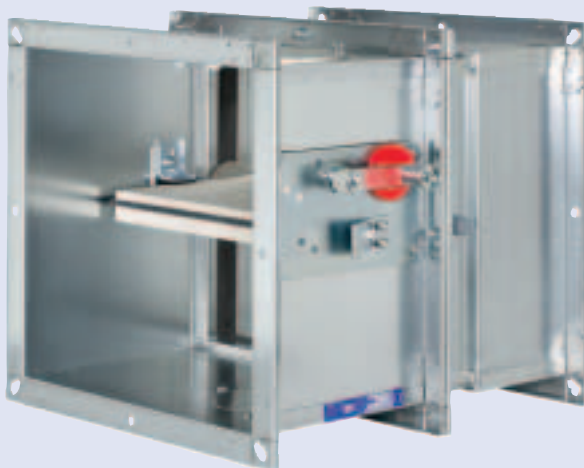
TROX[®] TECHNIK

The art of handling air

Contents · Description

Description _____	2	Technical selection data _____	
Correct use _____	4	Differential pressure _____	24
Construction · Dimensions _____	6	Sound power level _____	25
Attachments		Free cross sectional area, resistance coefficient and correction values _____	26
For dry mortarless installation in solid walls _____	8	Installation details	
Cover grille _____	12	In solid walls, ceiling slabs and gypsum wallboards _____	27
Circular spigot plate _____	13	In solid walls with difficult access or multiple fire dampers _____	28
Flexible connectors _____	14	Directly on the face of solid walls and ceiling slabs _____	31
Extension piece _____	15	Adjacent to solid walls and ceiling slabs _____	32
Accessories		Suspension systems _____	33
Limit switch _____	16	Remote from solid walls _____	34
Spring return actuator _____	17	In lightweight partition walls _____	36
TROXNETCOM _____	20	In lightweight fire walls _____	42
Smoke detectors _____	22	Order Details _____	44
Quick selection _____	23		

FK-K90-LD with fusible link
Combinations of width and height up to
B x H = 800 mm x 400 mm



FK-K90 with fusible link



Fire dampers shut automatically to prevent the propagation of fire and smoke through ductwork to adjacent designated fire compartments. FK-K90 fire dampers are tested according to DIN 4102 and EN 1366-2. Local requirements and building inspectorate approvals are essential.

Correct approved installation locations are directly in solid walls, ceiling slabs, gypsum wall boards, lightweight partitions and lightweight fire walls, directly on the face of solid walls and ceiling slabs, adjacent to solid walls and ceiling slabs and remote from solid walls.

Installation in vertical or horizontal ducts. Air flow direction is not critical. When installed in walls or ceiling slabs combustible ventilation ducting may be connected directly to the fire damper. In the case of fire, the damper is triggered at 72 °C or 95 °C (for use in warm air ventilation) either by a fusible link or thermoelectrically with a spring return actuator. The release mechanism is accessible and can be tested from the outside. The fire dampers have two inspection panels.

The fire resistance class of fire dampers type FK-K90 is dependent on the application.

Special characteristics

- Tested for fire resistance properties according to DIN 4102 and EN 1366-2
- Construction (LD) has lower sound power level and differential pressure
- Equipped with spring return actuator, accessory ZEX1 approved for explosion-hazard areas
- Easy dry mortarless installation can be achieved with an installation kit
- Integration into the centralised BMS with TROXNETCOM

General building inspectorate licence: Z-41.3-321

Further, current information in particular licence and operating manual and installation instructions can be found on our website.

Our “Easy Product Finder” design programme is also available on the Internet for the design and selection of our products.

FK-K90-LD with spring return actuator
Combinations of width and height up to
 $B \times H = 800 \text{ mm} \times 400 \text{ mm}$



FK-K90 with spring return actuator



FK-K90-LD with blade bead seal

- Combinations of width and height up to $B \times H = 800 \text{ mm} \times 400 \text{ mm}$
- Release mechanisms:
 - Fusible link 72 °C or 95 °C for use in warm air ventilation.
 - Spring return actuator Type BLF or ExMax.
- Combinations of width and height up to $B \times H = 800 \text{ mm} \times 400 \text{ mm}$ are supplied as standard construction for type FK-K90-LD.

FK-K90 with landing angles with bead seals

- All combinations of width and height, except widths 200 mm and 250 mm which only have a height of up to 500 mm.
- Release mechanisms:
 - Fusible link 72 °C or 95 °C for use in warm air ventilation.
 - Spring return actuator Type BLF, BF or ExMax.
- Combinations of width and height up to $B \times H = 800 \text{ mm} \times 400 \text{ mm}$ are supplied as standard construction for type FK-K90-LD. Construction in this dimensional range can be supplied with landing angles with bead seals on request.

